

Lucas



LUCAS AUXILIARY LIGHTING RANGE

MODERN DESIGNS FOR EMERGENCY LIGHTING.

lucasautomotive.com

OUR RANGE GOES FURTHER



ABOUT LUCAS

Lucas was founded in 1875 and today is the oldest continuously trading automotive brand in the world. For generations the Lucas name has been relied on all over the world, in every country, in any environment.

Whatever your challenge, there's an answer in a famous Lucas green box. Lucas products arise out of technical superiority and a spirit of innovation that has guaranteed ongoing international success with strong values, giving customers the reassurance of excellence. A reputation based on a wide product range, along with exceptional durability and resistance. Guided by the past. Leading in the present. Looking towards the future.



WHY LUCAS OVER OTHER BRANDS?

- Legendary British brand since 1875
- Known brand in after market for its quality and reliability for many years
- Provides an extensive range of automotive products
- Products are driven by innovation
- We've been continuously trading longer than any other automotive component brand in the world.



LED BEACONS: PRODUCT RANGE

LED beacons provide cost-effective lighting, emitting more lumens per watt, with options in the 10V-80V range and varying LED quantities, suitable for diverse applications.



LUC-LED-VM-209-S-D-A

- Heavy duty plant and construction beacons
- 30V-10V-ECE-R10 for EMC approval
- 2 wires (30cms) – 3 bolt
- 60SMD LEDs
- 165mm x 140mm.



LUC-LED-275

- High profile construction beacon
- 10V-30V-ECE-R10 for EMC approval
- 80SMD LEDs
- 2 wires (30cms) – 3 bolt
- 170mm x 176mm.



LUC-FLT-3-278A

- Industrial beacons
- 10V-110V
- ECE-R10 for EMC approval
- 20SMD LEDs
- 2 wires (30cms) – 3 bolt.



LUC-3-283-A

- Entry level industrial beacon, plant and construction
- 12V-24V
- ECE R10 for EMC approval
- 30SMD LEDs
- 2 wires (30cms) – 3 bolt
- 122mm x 112mm
- One flash pattern.



OUR RANGE GOES FURTHER

STROBES: PRODUCT RANGE

Strobe lights are used on emergency vehicles, available in different sizes and LED quantities within a 10V-30V range.



LUC-708

- 26 flash patterns
- ECE R10/R65 approved
- 10-30v
- IP67
- Bolt mount
- 3 LED 76mm x 29mm x 8.8mm
- 4 LED 96mm x 29mm x 8.8mm
- 6 LED 120mm x 29mm x 8.8mm.



LUC-709

- 26/21 flash patterns
- ECE R10/R65 approved
- 10-30v
- IP69k
- Bolt mount
- 6 LED 113mm x 29mm x 9mm
- 12 LED 114.5mm x 43mm x 9mm.



LUC-4HLED

- 26 flash patterns
- ECE R10/R65 approved
- 10-30v
- IP69k
- Bolt mount
- 4 LED 96mm x 28mm x 198mm.

MINI BARS: PRODUCT RANGE

Mini light bars offer high-impact warning lighting in a compact design for various applications, with options like mounting, voltage range, and LED quantity.



LUC-156

- 26 flash patterns
- ECE R10/R65 approved
- 9-30v
- IP67
- 200 LEDs
- 4 bolt mount.



LUC-112

- 8 flash patterns
- ECE R10/R65 approved
- 9-30v
- IP65
- 72 LEDs
- 1 bolt/mag mount.



LUC-116

- 26 flash patterns
- ECE R10/R65 approved
- 9-30v
- IP67
- 60 LEDs
- 1 bolt/mag mount.



LUC-117

- 26 flash patterns
- ECE R10/R65 approved
- 9-30v
- IP67
- 72 LEDs
- 1 bolt/2 bolt mag mount.



OUR RANGE GOES FURTHER

REAR LIGHTING: PRODUCT RANGE

Rear lighting options are designed for long haul trailers, featuring powerful LED signals with different voltage ranges and approvals.



LUC-820

- Stop/tail/turn
- ECE R10/R148 approved
- 10-30v
- IP67
- 6 LEDs
- Screws or 3M adhesive.



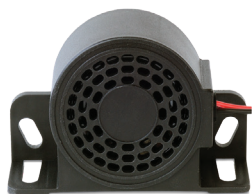
LUC-853

- Stop/tail/turn/reverse/fog
- ECE R3/R6/R7/R10/R23/R38 approved
- 12-24v
- IP67
- Surface mount
- Progressive indicator.



REVERSE ALARMS: PRODUCT RANGE

Our backup alarms produce powerful beeping sounds, suitable for vehicles such as cars, excavators and container vehicles, with versatile mounting options.



LUC-402

- 82-107 dB
- ECE R10 approved
- 10-80v
- IP67
- Bolt mount
- Tonal or white noise
- Night silent function.



LUC-406

- 97 dB
- ECE R10 approved
- 10-30v
- IP68
- Bolt mount
- Talking alarm – Left turn/right turn
- 84mm x 68mm x 45mm.



OUR RANGE GOES FURTHER

Lucas Fluids, A/C Gas and Emergency Lighting GCC
PO BOX No. 342001, IFZA Business Park, DDP, United Arab Emirates.
Mob.: +971 54 784 5815
Email.: rag@ampcodubai.com